

# Isle Royale Boaters Association

## February 2000 Newsletter

### In This Issue:

- Executive Committee Report
- Finance Report
- Dr. Peter Carmody on the Federal Land Grab
- Isle Royale Trivia Quiz
- Creative Touch Tackle Fishing Lures
- Annual Meeting
- Mid-Winter Boat Check

### Executive Committee Report

by Ed Glowacki

With our membership of well over 600, IRBA has become a strong organization dedicated to our purpose. We must continue to build our organization and there is no better way to achieve this goal than through our own memberships' recruiting efforts. I am sure every one of us knows of friends or associates that are not IRBA members but should be! Lets start doing some recruiting! The math is pretty simple, if each member recruited just one new member; we would be well over 1,200 members. You get the idea, now lets go get the members! Enclosed is a membership form for that new member you are going to recruit. It would also be very helpful if you would consider renewing your membership early, make copies of the form as needed. And don't be shy about making an extra donation!

As you are aware, our lawsuit IRBA vs. NPS was filed in August of 1999. As part of the lawsuit proceedings, IRBA has received the Administrative Record. This record is comprised of 15,000 pages of NPS correspondence and documents that went into the formation of the GMP/EIS for Isle Royale. The IRBA Executive Committee has painstakingly reviewed all 15000 pages! At times during the review process, we just shook our heads in amazement at the attitude of the NPS towards the owners of the park; you, the American people and I! At other times, we were as elated as little kids at Christmas when we found critical evidence in support of the lawsuit. In fact we found so much evidence of wrong doing on the NPS's part, we found it necessary to amend the lawsuit by adding additional counts.

The lawsuit now includes counts in the following general areas of law violations; the Wilderness Act, the Isle Royale Enabling Act, the Boundary Waters Treaty, the National Environmental Policy Act, Amendment V of the U.S. Constitution, the Americans with Disabilities Act, the Administrative Procedure Act, and the National Parks and Recreation Act.

Special thanks to Mary and John Kappler for housing the 15,000 page of the Administrative Record! Not only are they housing the Record, they have opened their home to the IRBA multiple times as we combed through the Record for the supporting evidence needed for the

lawsuit. Mary has provide countless meals and wonderful treats to sustain us during our reading marathons, and I think we may have worn-out John's copier!

## **Finance Report**

**By John Kappler**

The IRBA has realized \$59,600 from it members and friends since September 30, 1998. In addition, one generous donor gave stock valued at \$5,000 to the IRBA in December 1999. We have spent most of what has been received in our efforts to improve Isle Royale's pavilions at Belle Isle and Daisy Farm, keeping members and friends up to date on our activities, website, supplies, etc. \$42,980 of our expenses have been for well-earned legal services. Essentially, our funds are getting very low and more donations are needed to continue this very solid case the IRBA has against the awful National Park Service's so-called General Management Plan. Please continue your support for this legal battle. We are very confident that the IRBA is going to win on all the counts contained in the lawsuit.

## **The Federal Land Grab**

**By Dr. Peter Carmody**

[Editor's Note: Dr. Carmody wrote the following letter to the President of the ISMA (International Snowmobile Association) concerning the USFS/Clinton Federal Land Grab and the Isle Royale General Management Plan.]

Dear Mr. Klim,

I read with considerable interest your article in Michigan Snowmobile News detailing the attempted confiscation of public lands by the US Forest Service (USFS) by their removal of these lands from the use and enjoyment of their rightful owners, the U.S. Citizens, as well as the banning of the commercial harvest of mature trees, or timber stand improvement, which are beneficial on a day to day basis to the U.S. Economy with the many jobs provided by this utilization. I am encouraged that you have perceived their actions as a pure and simple, "land and power grab."

I communicate to you to assure you that your perceptions are accurate, and that in any and every way possible, I encourage you to organize your efforts to stop this attempt to declare public lands to be "off limits" to the public.

If I had not recently witnessed the National Park Service (NPS) implement a general management plan (GMP) over the utilization of the Isle Royale National Park I would believe that your concerns and fears were unfounded as simple public hearings would result in a rational use plan that was "middle of the road" with accommodation to the various and sundry

user groups with compromise of all the involved parties resulting in a coherent plan. Sadly this was not the case as the public hearings proved to be simply window dressing for the sake of conducting a hearing and not for actual input. Time has proven that a predefined agenda existed by NPS for the GMP, which has been subsequently implemented, at times overriding a demonstrated 80% majority on certain use issues. It was most discouraging to see falsification of visitor statistics, emotional impact statements, misinterpretation of environmental activities, and on a day to day basis the obvious double standards as rules and regulations applied to the visitors were grossly violated by the NPS. The NPS experienced an accidental sewage spill (thousands of gallons of raw sewage into Lake Superior) and attempted to cover it up, but simple disposal of dishwater results in a fine. NPS fuel spills went unmitigated, but simple discharge-of bilge water with a trace of petroleum results in a fine,, etc., etc. While visiting Isle Royale this past summer July 29th (unofficially Christmas in July for the NPS) we are tucked into bed at 10:00 p.m. and told we could not laugh boisterously, probably for fear of upsetting the biorhythm of the nocturnal wolf, while a party rages on Mott Island (NPS Headquarters) complete with generators running, music, iced beer, etc., culminating in a drunken coed bare ass leap from the bow of the Ranger III boat, actually quite a respectable height. The following morning at 5:00 a.m. in the stealth of darkness we crawl past the Ranger III on our boats honoring the no wake zone for fear of rocking the hung over crew. Don't get me wrong, I don't begrudge them, but as I wasn't invited, I can't stand the hypocrisy. Some of the contentions of the NPS were so absurd that at times their own brave employees who possess personal integrity stepped forward to refute the NPS claims and statistics with of course there always existing the potential for retribution by a vengeful employer. It appeared that an orchestrated agenda existed to support the malfeasance of an inappropriate GMP. It is obvious that the new GMP is for the sake of ultimately dismantling access and accommodations to Isle Royale National Park piece by piece so it will become impossible to visit, and if you do visit it will be with great personal perseverance, and the regulations will be so restrictive that the visit will not be enjoyable or meaningful.

It is disturbing that this countries policies are becoming increasingly enacted by unnamed elitist who apparently have the ear of our amoral president and with the simple stroke of a pen are able to take another 40 million acres out of the public domain from the use of its owners the American citizens. This new addition will now total approximately 80 million acres. I wonder if the area under management by the USFS is cut by 40%, I almost slipped and said work force, but actually mean people receiving checks from the USFS, will be cut by the same 40% as there will be nothing to manage?

It is alarming that our form of government with its 3 well defined branches that includes intrinsic checks and balances has evolved to the point that we witness special interest elitist groups in concert with non elected NPS and USFS management and the ear of the president enact these rules and regulations. They are then jammed down the throats of the citizens against their best interest and desires, with the judicial branch used to enforce the bureaucrats own conceived of and interpreted regulations. How did this role reversal occur, with we the plebiscite being subservient to these high priced, arrogant, and at times all powerful condescending bureaucrats? When did we make the transition from the hoards of bureaucrats who were public

servants to these same bureaucrats becoming so supremely knowledgeable and arrogant that they are able to promulgate rules and regulations against the will of the people? Is this really America?

A country existed that functioned in this fashion whose flag was red and had a sickle on it which was symbolic of the instrument that was used to cut the throats of their own people (as many as 40 million) when they came to power. This form of government has now perished and the people are attempting to become a democracy with the process proving to be ever so difficult. Why are we attempting to emulate this failure?

You will hear many new concocted terms by the USFS such as "Pre-European settlement conditions" that have a nice ring and may sound better than the truth which is "off limits" to all U.S. citizens as we heard the same type of lingo by the NPS such as "soundscape" which may in reality turn out to be an attempt to implement a 12 mile non motorized zone around Isle Royale. Who knows a moose might get diarrhea if he heard a motor boat while taking a crap, but the implication is clear if you enact a 12 mile "soundscape" around a Maritime National Park, how will you get there? BINGO - NO VISITORS!!!

As for "Pre-European Settlement Conditions" - BULLSHIT! - - Did they tell you that almost twice the biomass exist in this country today than at that time, and if the agricultural crops are counted the biomass is many fold? Are they unaware that this country has experienced mass migration, immigration, and Americanization of millions of people in the past 300 years making us the third most populated country in the world if you assume Russia is no longer one country. Are they unaware of the reasons our grandparents settled here? I knew my four grandparents well with each coming directly from 4 different Hold countries", Finland, Sweden, Germany, and Ireland. Did they consider themselves European? No - they proudly considered themselves Americans. They came to this country to have freedom with all its ramifications, to enjoy private ownership of land, to possess private personal property, to avoid excessive taxation and to have a real voice in their own democratic government. If they were alive they would be dismayed and saddened by the apathy of the American people as the bureaucracy erodes and captures by default the very premises that they were willing to risk their lives for.

Now of course if the National Parks and USFS lands become off limits to the American people it will require an Expeditionary Task Force every generation which will have to be exceedingly well trained to venture off into the untamed wilderness to make a video documentary; so the people who have been herded into the metropolitan areas by their government living in tiny little cubicles in close quarters like worker bees and ants will be able to understand and appreciate what their benevolent government has saved for the next generation as they have never seen or experienced it themselves. The process will be repeated each generation into perpetuity so the appreciation will never be lost and could even be staffed fulltime by the displaced NPS and USFS employees - ensuring that a drop in government employment does not exist. With the evolution of technology one could paste little stones on ones treadmill, don ones hiking boots, sun screen, bug dope, and wear ones virtual reality helmet and experience a trek through the wilderness just as if one were there. With this system in place there would be a better ability for

the worker bees and ants to focus on their work without distractions such as the return to nature with its ability to restore ones soul. Life would be shortened and the government would not have to support people during their aging non productive years with the result being an even greater return to the government than the present 50% of the monetary value over the costs of all goods and services we produce. All living Americans will understand and live Plato's analogy of the cave so it will no longer have to be taught in school.

As to the larceny by conversion of Isle Royale by the NPS, there exist an organization that is taking to court the NPS by using the contributed hard earned dollars of everyday working people to defend their rights against their own government which is financed by the endless stream of dollars involuntarily contributed by these same people through their own tax dollars. Is it really right that the American people are being forced to take their own government to court, when honest public hearings that would have been responsive to the input of the citizenry would have resolved these issues?

If you are interested in the organization attempting to defend the rights and interest of the American people for the realistic use of their own National Parks, that group is the Isle Royale Boaters Associations and their agenda can be reviewed at [www.isleroyale.org](http://www.isleroyale.org).

I think you need our help, I know we need your help, I believe America desperately needs both of us.

Sincerely,

Peter E. Carmody, MD  
L'Anse, Michigan

## **Isle Royale Trivia Quiz**

### **Article**

This newsletter we are having a trivia quiz! Think you know the history of Isle Royale, try answering these questions. Give it a try and check your answers with the answers below.

1. What year did the first white man reach Isle Royale and what was his name?
2. Where did Elizabeth Island get its name?
3. Who named Ishpeming Point and why?
4. Where did the name Doden Reef come from?
5. Where did the name Domen Reef come from?
6. What does Doden and Domen mean and what language did they originate from?

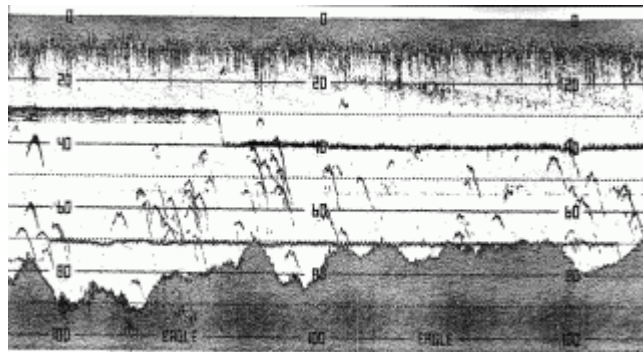
## Creative Touch Tackle Fishing Lures

by Dave Hand

I have been fishing the waters of Isle Royale for about 20 years and it seems as time goes on the fishing just gets better. Or is it the fishing tackle that just gets better? In the early 1980's, my fishing buddies and I trolled slowly with sucker bait precision threaded onto a treble hook and it was attached to a series of flashers. A big lead weight was used with 150 lb test wire fishing line to deliver the bait to depths of up to 120 ft. Catching a lake trout with this tackle was like reeling an old boot filled with concrete. This method was productive but was a lot of exercise and it seemed that the shoals harvested an abundance of our lead weights. In the middle 1980's, we started using light tackle fishing rods with downriggers. Instead of the sucker bait, we used spoons called northport nailers and flashers or dodgers with flies and squids. While flashers and dodgers were successful, the spoons caught far more fish. This technique was more fun and challenging and of course more sporting especially when 4 and 6 lb test line was used. Consequently, we have used the spoons ever since. In the middle 1990's we tried thunder stick and thunder stick junior body baits with some success but they could not out fish the northport nailer spoons.

During a Labor Day fishing trip to the island this past year, we had the opportunity to compare the spoons we use to a number of spoons made by a small tackle company in Duluth, MN. The company is called Creative Touch Tackle and the owners are David Dueland and Mickey Litwin both from the Duluth area. While avid sport fishermen of Isle Royale for many years, David and Mickey experimented with different spoon designs and finally developed some that they feel are the best for catching trout and salmon. The spoons are designed with a needle like nose that provides a flutter action at low trolling speeds which is ideal for lake trout fishing and at higher trolling speeds provides a porpoise like action which is ideal for salmon fishing.

Fishing around Blake's Point and the Palisades, IRBA member David Turnquist and I decided to test the Creative Touch Tackle lures. We put one of their lures on one downrigger and fished it against three northport nailers on other three downriggers. There were plenty of fish around as one can see from the photo of the strip chart paper (the fish are the upside down V's shown on the chart paper).



Strip chart recording off Blake's Point

Unfortunately, that day the fish were slow to bite due to the change in the weather conditions. However, we managed to catch and release several lakers and a few salmon. Our test results showed that David and Mickey's lure out fished our lures by two to one. The comparison was not an even match as we only fished one of their lures for every three of ours. But I will say that fishing with their lures was impressive and I will be using them on future fish trips to the island.

As IRBA members, David and Mickey have donated twelve dozen lures to the IRBA to be used to help raise money for the lawsuit. Their gift is worth over \$ 1,000 and we thank them for their donation. These lures will be available for \$3.00 each through the IRBA organization and all the proceeds will be placed in the legal fund. Trust me, if you fish the Lake Superior waters of Isle Royale, you should give these lures a try.

## **Annual Meeting**

### **Announcement**

The annual meeting is Saturday, April 29th at the Michigan Tech Memorial Union Ballroom in Houghton. In addition to a prime rib buffet dinner we are planning on a speaker and raffles to make a fun filled social event for the members to attend. Mark your calendar now and we will be getting more details to you in the near future.

## **Mid-Winter Boat Check**

### **Article**

Your boat is tucked away under its storage tarp for the winter, out of sight and out of mind. Its worth a trip out to the boat for a mid-winter check. Here are some tips that will help prevent an unwanted spring surprise.

- Check for mice! Nothing is worse than finding that a mouse and his extended family made your boat home for the winter.
- With the heavy Lake Superior snows, check to be sure your tarp hasn't collected a ton of snow in a low spot. Also check to be sure all of the ropes holding the tarp a tight and secure.
- Check to be sure that your boat cover has adequate ventilation. There should be no frost or moisture accumulating on the inside of the tarp or boat.

## Answers to the Isle Royale Trivia Quiz

Article, continued

1. 1622, Etienne Brule.
2. Alfred Merritt (grandfather of IRBA attorney Grant Merritt) named this island for his daughter Elizabeth
3. The Ojibway Indians named Ishpeming Point. *Ishpeming* is the Ojibway word for heaven or high ground and the point is one of the highest on the island.
4. Mike Holte, nephew of Ingeborg Holte, named this reef.
5. Again, Mike Holte.
6. Doden is found in a variety of Scandinavian and Germanic languages. Translated it means Death. Domen is Swedish meaning Doom.